

Sudbourne Road, Brixton, SW2

1 bedroom flat for sale

£499,950

Share of Freehold

Property Details

A stunning one double bedroom period garden flat in a popular residential area with 830 square feet of internal living space. The property has development potential and could be extended to increase value, subject to the necessary permissions. The property comprises a characterful reception and an eat-in kitchen, a spacious double bedroom, a modern bathroom and a stunning South facing garden. All in all, there are not many one bedroom flats of this size in such a desirable location with so many selling points. The property is a seven-minute walk to Brixton and a twelve-minute walk to Clapham.

Features

- Private garden
- Victorian
- Characterful features
- Sought after location
- Walking distance to the northern and victoria tube lines
- Potential to extend (stpp)
- Over 800 square feet of internal living space

Council tax band D

EPC rating D (61)



Sudbourne Road, Brixton, SW2

Sudbourne Road

K

1 Bed flat

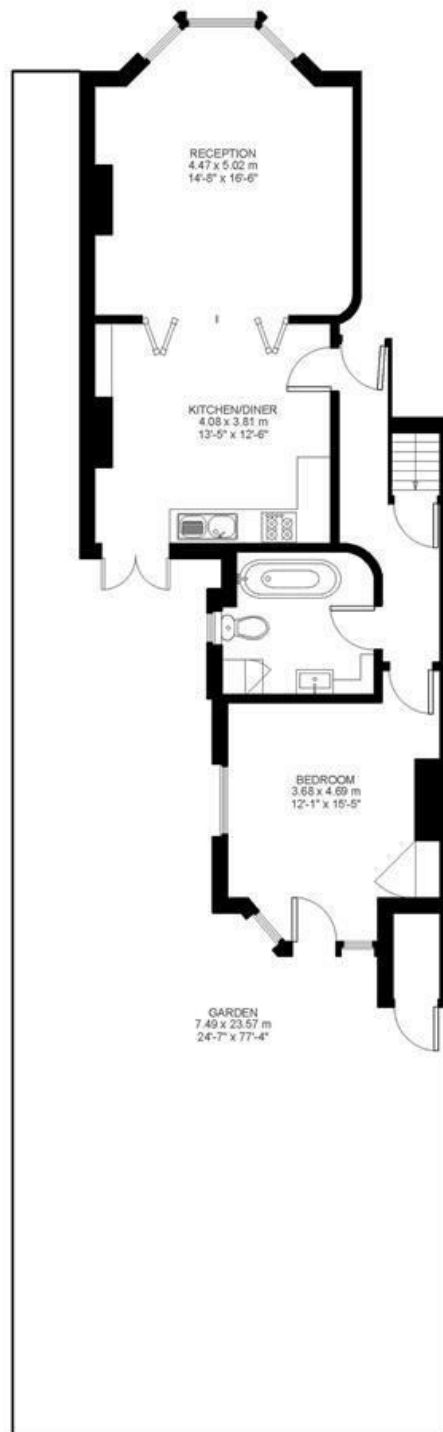
Approx internal area:

830 sqft 77 sqm

While we do try our very best, floor plans are produced as a guide only and we take no responsibility for the precise accuracy with which any property is represented



Basement



Ground Floor



Sudbourne Road, Brixton, SW2

